

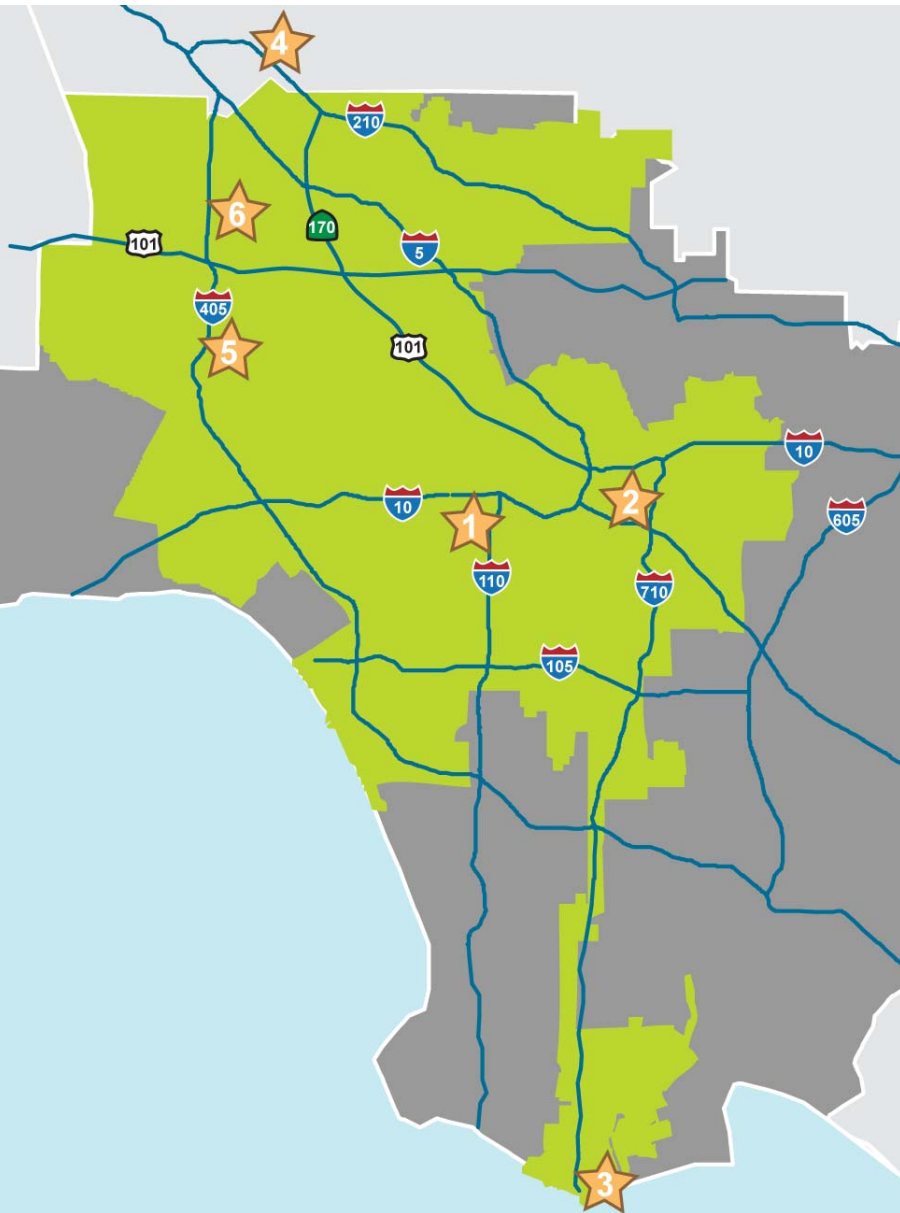
L.A. Renewable Portfolio Standard

Solar Generation Component

A stylized sunburst background with a semi-circle at the bottom center. The sun is a solid orange semi-circle, and its rays are represented by numerous thin, parallel lines radiating outwards. The rays alternate between light yellow and orange, creating a vibrant, sun-like effect.

Public Workshops
September 2009

Solar Generation Component



Welcome to Solar Power Workshop Series



Central:
Wednesday, Sept. 16 | 6 – 8 p.m., Expo Center



East:
Tuesday, Sept. 22 | 6 – 8 p.m.
Glassell Park Community Center



Harbor:
Wednesday, Sept. 23 | 6 – 8 p.m.
Port of LA Administration Building



Valley:
Saturday, Sept. 26 |
10 a.m. – Noon, Mission College



West:
Tuesday, Sept. 29 | 6 – 8 p.m.
Stephen S. Wise Temple

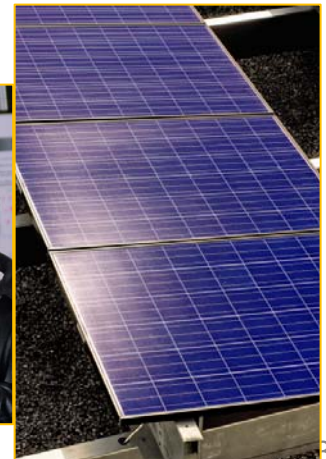


Valley:
Wednesday, Sept. 30 | 6 – 8 p.m.
Marvin Braude Constituent Center ²

Solar Generation Component

Purpose of Workshops

- Provide information about the Solar Generation Component of the L.A. Renewable Portfolio Standard
 - Why, what, and when
- Collect input and feedback
- Initiate the public scoping process per CEQA
- Prepare summary report for LADWP Board



Solar Generation Component

Presentation Overview

- What's At Stake? Impact of Global Warming
- Energy Resource Planning: How It All Fits Together
- Renewable Portfolio Standard
- Solar Generation Component
- Five Solar Programs: Utility-Built, PPAs, Solar Incentive, SunShares, Feed-in-Tariff
- Economic Development & Jobs
- What Solar Can Achieve
- Breakout Sessions

Solar Generation Component

What's At Stake? Impact of Global Warming

- Scientific consensus for global warming.
- Use of carbon-based fossil fuel has increased greenhouse gas (GHG) emissions in our atmosphere, reaching dangerous levels.
- Possible impacts to L.A.:
 - Rising tides, violent storms and floods.
 - Hotter, dryer days.
 - Increased frequency of wildfires.
 - Reduced water and energy reliability.

Solar Generation Component

Renewable Portfolio Standard (RPS)



- LADWP power supply to include
 - 20% from renewable resources by 2010
 - 40% from renewable & sustainable resources by 2020
 - Eliminate coal by 2020
- Will help to
 - Improve health, environment
 - Protect ratepayers from rising fuel and environmental mitigation costs

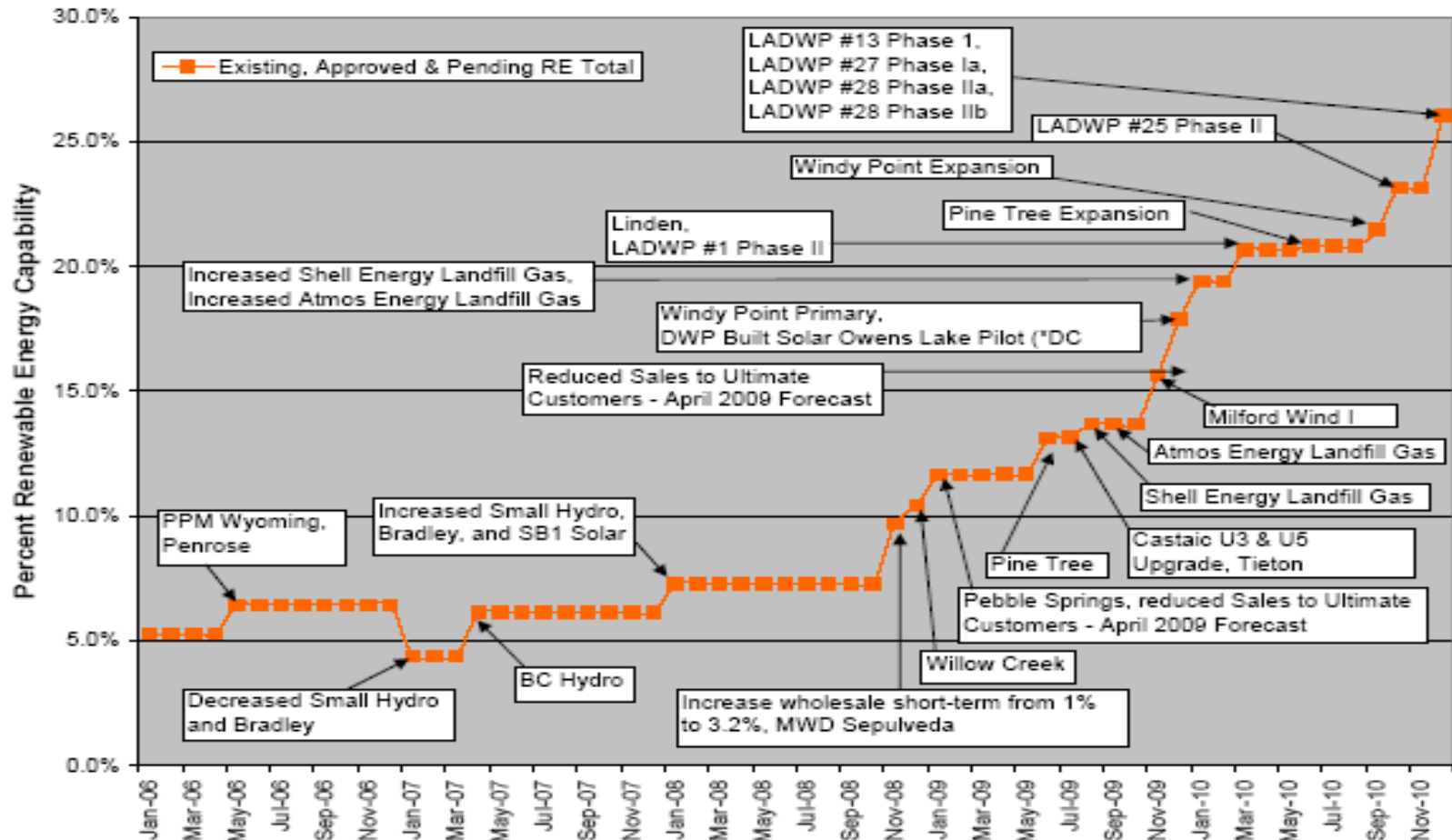
Solar Generation Component

Transmission and RPS Project Map



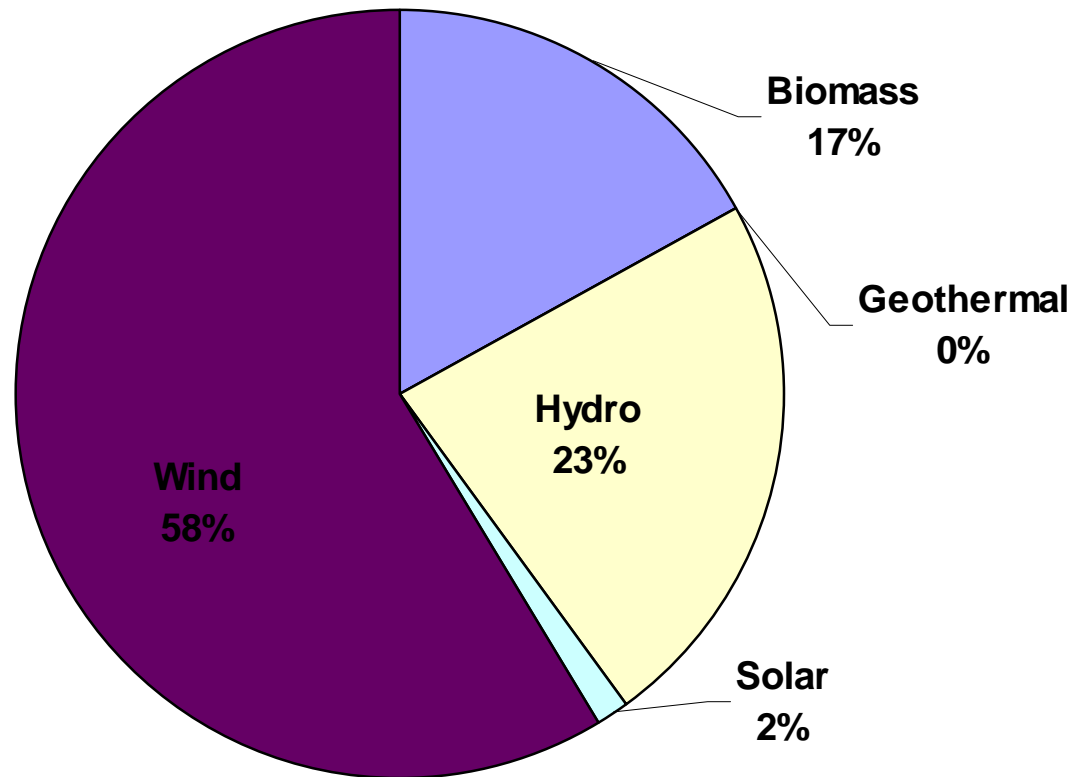
Solar Generation Component

RPS Project History by Month



Solar Generation Component

Renewable Portfolio Standard- 2010 Projection of Resource Mix



Solar Generation Component

What is the Solar Generation Component?

Harnessing solar power to increase renewable energy, reduce carbon-based fossil fuel emissions, and continue providing affordable & reliable power for customers



Solar Generation Component

Why Go Solar?

- Reduces local and global emissions in our own backyard
 - Improves health and quality of life
 - Sun is a free, abundant renewable energy in L.A.
 - Offsets need to burn natural gas as a “peaking” power
 - Provides hedge against fossil fuel costs
 - Diversifies energy resources
- 
- Sustainable development (makes use of unused rooftops)
 - Lower integration cost (near existing transmission)
 - Local manufacturing & job creation
 - Capital investment w/lower maintenance

Solar Generation Component

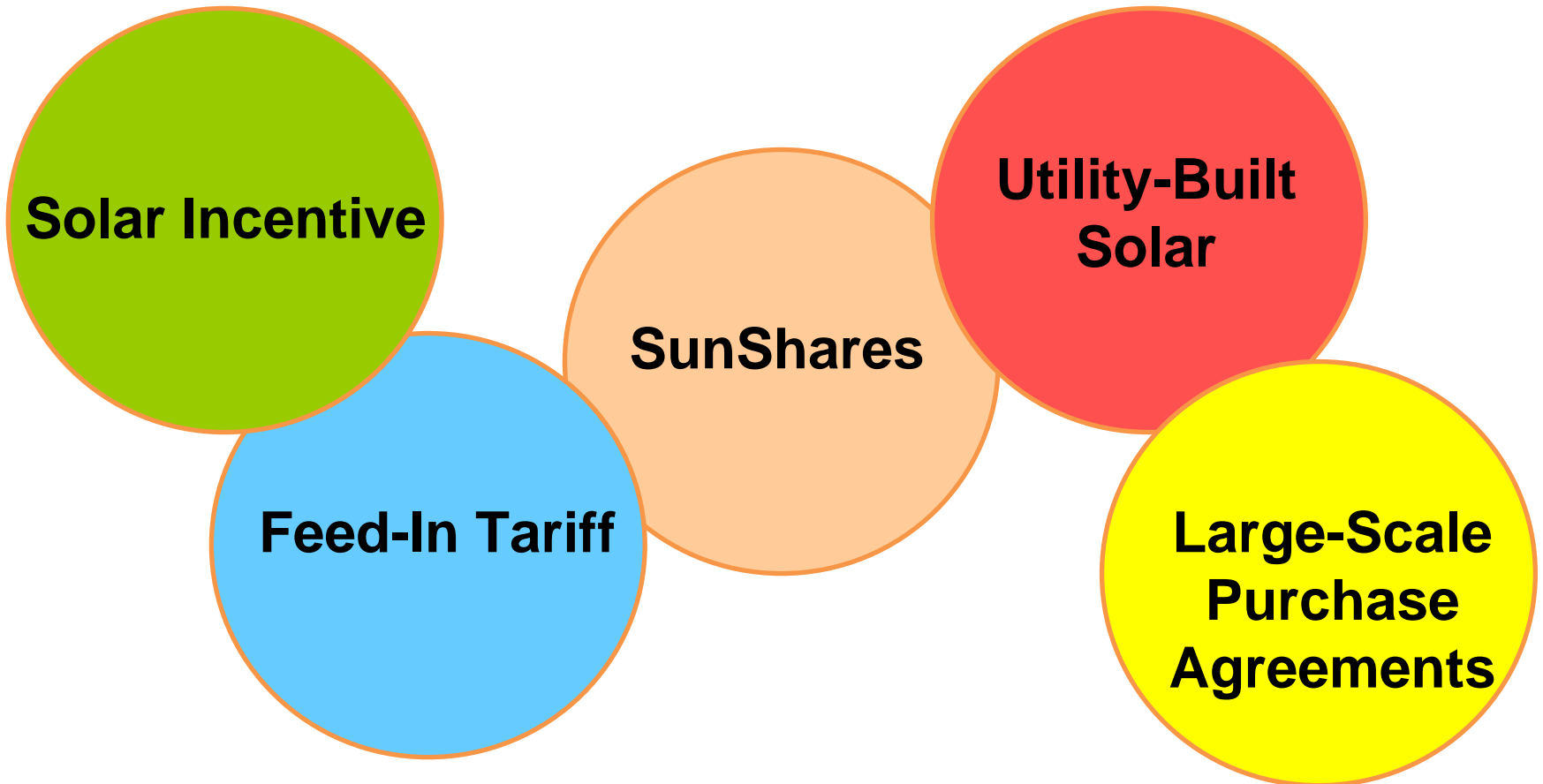
Solar Generation Policy Objectives

- **Integrate solar to enhance System reliability**
- **Support long-term customer benefits**
- **Stimulate economy; create jobs & industry**



Solar Generation Component

**The Five Solar Programs –
Goal: *At least 1,280 MWs by 2020***



Solar Generation Component

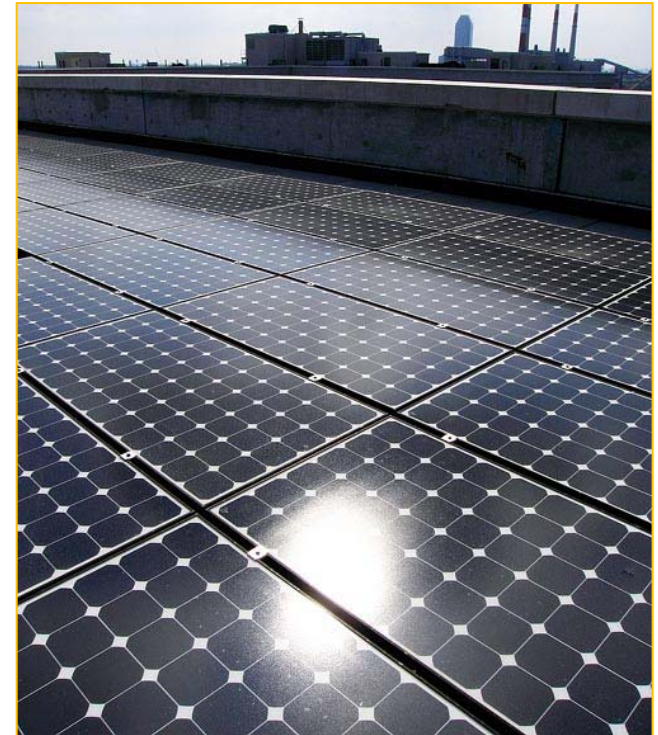
Utility-Built Solar

Description

- Installation of solar projects by LADWP using local labor
- Opportunities for small and large roof tops, parking lots, small to extra large open space

Why Needed

- Secure cost-effective and long-term solar power



Solar Generation Component

Utility-Built Solar (cont.)

Why Needed

Achieves benefits from utility-built projects

- Maximize use of existing City assets
- Stimulates local economy (bid preferences for local jobs & manufacturing); captures economies of scale
- Reliable power -- utility-controlled and maintained; offsets natural gas as peak power

Goals: 50 MW by 2010

400 MW by 2014



Solar Generation Component

Utility-Built Solar (Cont.)

Recent Activities

- Job training and hiring plan
- Schedules
 - Development, Environmental, Engineering/Procurement, Construction
- Property review
- Engineering & implementation planning
- Issued RFP for initial materials procurement

Financial Considerations

- Incremental rate for RPS (including solar) < 1%
- About \$1/mo. increase for avg. residential customer
- Initial materials purchases confirm price projections

Solar Generation Component

Large-Scale Power Purchase Agreements

Description

- Long-term agreements to purchase power from solar developers, with options for LADWP project ownership
- Ex) Niland Solar Farm

Why Needed

- Optimize benefits from some of the world's best solar resource areas near L.A.

Goal: 75 MW by 2010



Solar Generation Component

Solar Incentive Program

Description

- Financial incentives for ratepayers
- Customers receive credit for excess energy generated from their systems (net metering)
- New financing strategies could include loans and/or financing districts

Why needed

- Encourages customers to install solar system
- SB 1 requirements

Goal: 27 MW by 2010



Solar Generation Component

SunShares / Community Projects (new)

Description

- Customers can participate in community solar energy development
- Lease-type arrangement; provides virtual net-metering benefits from LADWP-built solar projects

Why Needed

- For residential customers who lack means to install their own systems (e.g., renters)

Next Steps

- Program launch: October 2010

Goal: 1 MW by 2010

Solar Generation Component

Feed-in-Tariff (new)

Description

- LADWP will buy energy from 3rd party solar power providers who connect to grid.
- Tariff based on cost to provide solar PV power + avoided transmission/distribution costs
- May include early buy-out option for host customer and/or LADWP

Why Needed

- Expands opportunities for 3rd party development of solar in L.A.

Next Steps

- Establish rate: January 2010
- Program launch: March 2010

Goal: 7 MW by 2010

Solar Generation Component

Economic Development & Jobs

- LADWP hiring & training labor force
 - 500 by Jan. 1, 2010; Up to 1,200 by 2013
 - Civil service, “exempt” & contract
 - Pipeline to permanent LADWP jobs
- Allow bid preferences for locally manufactured solar equipment (ordinance approved)
- Provide incentives for L.A. County businesses to bid on solar-related goods and services



Solar Generation Component

With Solar, We Can Achieve--

- Healthier, better quality of life in L.A.
- Locally sustainable, renewable energy
- More green jobs
- Local manufacturing
- Lower L.A.'s carbon emissions & carbon footprint

Solar Generation Component

Breakout Sessions

